



香港中文大學
The Chinese University of Hong Kong



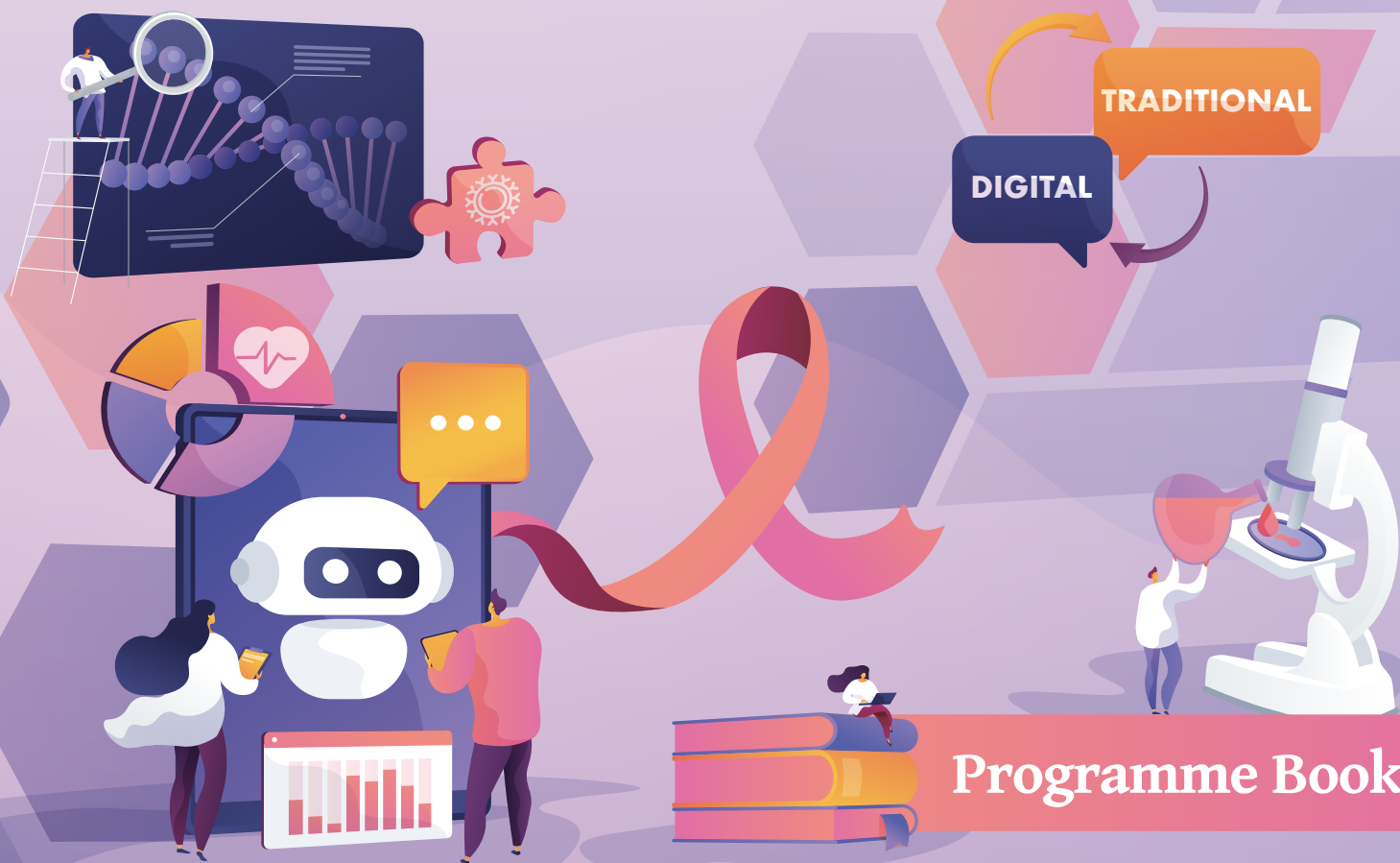
香港中文大學醫學院
Faculty of Medicine
The Chinese University of Hong Kong



9th Nursing Symposium on Cancer Care cum 1st Genomic and Genetic Nursing Forum

From traditional to digital:
Transforming cancer care and genomic nursing care
through collaboration and innovation

22 – 24 May 2024



Programme Book

Organiser

The Nethersole School of Nursing, Faculty of Medicine, The Chinese University of Hong Kong

Co-organiser The Hong Kong Cancer Institute, The Chinese University of Hong Kong

Main sponsor



Sponsors



Y. K. Pao Foundation Centre for
Nursing Excellence in Chronic Illness Care



SYMPOSIUM ORGANISING COMMITTEE

School Director



Professor Wai Tong CHIEN

Director and Professor
The Nethersole School of Nursing
Faculty of Medicine
The Chinese University of Hong Kong

Symposium Consultants



Professor Carman WH CHAN

Alice Ho Miu Ling Nethersole Charity Foundation
Professor of Nursing / Vice-Director of Education,
The Nethersole School of Nursing



Professor Winnie KW SO

Professor, The Nethersole School of Nursing

Symposium Chairpersons



Dr Dorothy NS CHAN

Assistant Professor, The Nethersole School of Nursing



Dr Marques SN NG

Assistant Professor, The Nethersole School of Nursing

Scientific Subcommittee



Dr Ka Ming CHOW

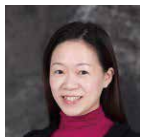
Associate Professor, The Nethersole School of Nursing



Professor William HC LI

Professor, The Nethersole School of Nursing

Management and Social Subcommittee



Dr Fiona WK TANG

Associate Professor (Practice in Nursing),
The Nethersole School of Nursing



Dr Gigi CC LING

Professional Consultant, The Nethersole School of Nursing

Sponsorship, Publicity and Publication Subcommittee



Dr Jojo CL WONG

Associate Professor, The Nethersole School of Nursing



Dr Ankie T CHEUNG

Assistant Professor, The Nethersole School of Nursing

Genomic and Genetic Nursing Forum-Convenor



Professor Mary MY WAYE

Professor, The Nethersole School of Nursing

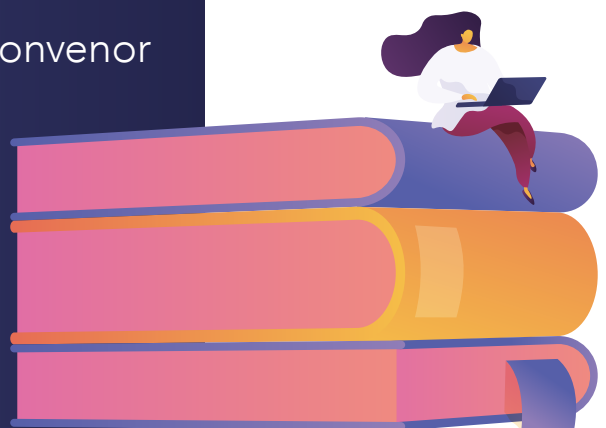


TABLE OF CONTENTS



Welcome message

4

Opening speaker

5

Keynote speakers

5

Plenary speakers

6

Forum speakers

8

Workshop speakers

10

Programme Planner 22 May 2024

12

Programme Planner 23 May 2024

13

Programme Planner 24 May 2024

16

Poster list

19

Floor plans & Campus map

22

Sponsors

23



WELCOME MESSAGE

It is my great pleasure to welcome you to the 9th Nursing Symposium on Cancer Care cum 1st Genomic and Genetic Nursing Forum and pre-symposium workshops to be held on 22-24 May 2024 in Hong Kong.

According to the World Health Organisation, cancer is a leading cause of death globally, accounting for 10 million deaths in 2022. In other words, nearly one in six deaths is due to cancer. The most common causes of cancer death are cancers of lung, colon, rectum, liver, stomach and breast. In 2022, there were approximately 20 million new cancer cases worldwide. The economic impact of cancer is significant and is increasing.

Foreseeing an escalating prevalence of cancer locally and globally, the Nethersole School of Nursing of the Faculty of Medicine at The Chinese University of Hong Kong organised the 1st Nursing Symposium on Cancer Care in 1999. Since then, the symposium has become an important nursing event contributing substantially to the promotion of quality cancer care in Hong Kong and beyond.

The theme of the symposium this year is 'From traditional to digital: Transforming cancer care and genomic nursing care through collaboration and innovation'. By pooling the efforts of nursing and healthcare professionals, policy makers, academics and researchers from around the world, this symposium aims to discuss strategies and initiatives for transforming cancer care and genomic nursing care through collaboration and innovation in local and global contexts.

Keynote and plenary speakers invited to the symposium are internationally renowned experts in the healthcare field. Their experiences and insights will stimulate dynamic discussions on innovative strategies and collaborative approaches for the delivery and promotion of cancer care and genomic nursing care. There are also concurrent sessions for delegates to dialogue on a wide range of theme-related topics, discussing the contemporary key issues and practice initiatives in oncology and genomic nursing.

Hong Kong is a vibrant city bringing together the richness of Chinese and western cultures in a spectacular setting. Overseas delegates may also take this opportunity to explore the beauty and attractions of the city, which will surely be an exciting and unforgettable experience.

Wishing you a fruitful symposium and a memorable stay in Hong Kong!

Professor Wai Tong CHIEN

Director and Professor
The Nethersole School of Nursing
Faculty of Medicine
The Chinese University of Hong Kong



OPENING SPEAKER



Professor Anthony Tak Cheung CHAN

Pro-Vice-Chancellor / Vice-President (Alumni Relations & Advancement), The Chinese University of Hong Kong, Hong Kong
 Li Shu Fan Medical Foundation Professor of Clinical Oncology
 Director of Sir YK Pao Centre for Cancer, Prince of Wales Hospital
 Director of Hong Kong Cancer Institute
 Chief Director of Phase 1 Clinical Trial Centre
 Professor (by courtesy) of School of Biomedical Sciences
 Cluster Coordinator in Clinical Oncology of New Territories East Cluster
 Associate Director of State Key Laboratory of Translational Oncology (Partner laboratory of CUHK)
 Master of Wu Yee Sun College

Prof Anthony Chan graduated from the School of Medicine in University College London and received post-graduate training in Medical Oncology at the Royal Marsden Hospital, UK. He joined The Chinese University of Hong Kong (CUHK) in 1993 where he was formerly Dean of Graduate School, and is currently Pro-Vice-Chancellor of CUHK, Li Shu Fan Medical Foundation Professor of Clinical Oncology, Director of the Sir YK Pao Centre for Cancer, Director of the Hong Kong Cancer Institute, Chief Director of Phase 1 Clinical Trial Centre, Associate Director of the State Key Laboratory of Translational Oncology (CUHK) and Master of Wu Yee Sun College.

Prof Chan conducted pivotal studies setting new treatment standards in multimodality approaches in nasopharynx cancer, developed the clinical applications of the biomarker EBV DNA and pioneered immunotherapeutic and targeted therapeutics in this disease. He has published extensively in international journals, and also delivered hundreds of international lectures. He has published reviews in Lancet and Nature Reviews Clinical Oncology as well as European Society for Medical Oncology (ESMO) treatment guidelines for Nasopharyngeal Cancer. He has served on the Editorial Board of Journal of Clinical Oncology and has been Associate Editor of Annals of Oncology since 2014.

KEYNOTE SPEAKERS



Professor Hae-Ra HAN

Elsie M. Lawler Endowed Professor
 Associate Dean, Community Programmes &
 Initiatives School of Nursing, Johns Hopkins University

Dr Han is a tenured professor of nursing and public health at the Johns Hopkins University. She previously served as Chair of the department of community public health and Director of the PhD program, and now serves as Associate Dean for Community Programs and Initiatives at the School of Nursing. Dr Han brings expertise in the study of community-based interventions aimed at promoting care and health literacy of chronically ill patients and their families. She has conducted research across the NIH Stage Model from participatory research to focus groups to clinical trials involving diverse people of color.



Professor Jo ARMES

Professor of Cancer Care & Lead for Digital Health
 Lead for Digital Innovation - ARC KSS School of
 Health Sciences, University of Surrey

Prof Armes is a Registered Nurse and Professor of Cancer Care & Lead for Digital Health at the University of Surrey. Her research programme aims to enhance supportive care provided to patients in order to help optimise the benefits of treatment whilst living as well as possible with the effects of cancer and the consequences of its treatment. She has extensive experience in developing complex interventions and evaluating their outcomes through randomised controlled trials and mixed-method research designs. Most recently she has been involved in an NIHR study assessing factors that impact the diagnosis and management of cancer in people who are in prison, and studies focused on developing and testing digital cancer interventions including the EU-funded eSMART study.

PLENARY SPEAKERS



Dr Dominic Chun Wan CHAN

Consultant
Department of Oncology, Princess Margaret Hospital

Dr Dominic Chan graduated from The University of Hong Kong in 2008. He did his clinical oncology training at Princess Margaret Hospital, Hong Kong and obtained his FRCR in 2017. He did his overseas training at Jewish General Hospital, McGill University in Montreal, Canada and Sunnybrook Health Sciences Centre, University of Toronto, Canada. His areas of interest include lower gastrointestinal cancers, hepatobiliary cancers, breast cancer, prostate cancer, cancer supportive care, and development of innovative service models and clinical applications such as integrated nursing/pharmacist clinic and telemedicine.



Professor Eun-Ok IM

Dean, Professor & Laura Lee Blanton Chair
School of Nursing
The University of Texas at Austin

Dr Eun-Ok Im is Dean and Laura Lee Blanton Endowed Chair at The University of Texas at Austin. Dr Im's outstanding scholarly contributions to oncology nursing include leading a research program that adopts internet and computer technologies to eliminate gender and ethnic disparities in cancer survivorship. Throughout the past 3 decades, Dr Im has successfully solicited NIH funding to support her research, including five R01 studies and one recent R61/R33 study as principal investigator, and has disseminated her findings, with 232 refereed journal articles. She has numerous national and international research awards including the recent Oncology Nursing Society Distinguished Researcher Award.



Dr Wui-Jin KOH

Senior Vice President and Chief Medical Officer
National Comprehensive Cancer Network (NCCN)

Dr Wui-Jin Koh, MD, is the Senior Vice President/Chief Medical Officer at the National Comprehensive Cancer Network (NCCN). In this role, he helps oversee the flagship NCCN Clinical Practice Guidelines in Oncology (NCCN Guidelines®) programme. In addition, he is responsible for medical leadership and oversight for NCCN's continuing medical education programme and the Journal of the National Comprehensive Cancer Network (JNCCN) and represents the organisation at clinical and scientific meetings. He is also actively involved in the NCCN Global initiatives.

Prior to joining NCCN in 2018, he served as Professor of Radiation Oncology at the University of Washington and Medical Director for Radiation Oncology at the Fred Hutchinson Cancer Research Centre/Seattle Cancer Care Alliance.

Dr Koh earned his medical degree at Loma Linda University School of Medicine. He conducted his post-graduate training at the University of Washington Medical Centre, completing a residency in radiation oncology and a clinical fellowship in metabolic tumor imaging. He is board-certified in radiation oncology.

Dr Koh's research interests include combined chemo-radiation strategies, cancer management guidelines development, and the role of imaging in radiotherapy and cancer care. He specialised in the management of gynaecologic and gastrointestinal tract tumors and the use of brachytherapy and intraoperative radiotherapy. He has received multiple Educator and National Top Doctors awards.

Dr Koh is well-published and involved in numerous professional societies, including the Society of Gynaecologic Oncology, the American Society of Clinical Oncology, the NRG-Oncology Clinical Trials Cooperative Group, the Western Association of Gynaecologic Oncology, and the International Gynaecologic Cancer Society.

PLENARY SPEAKERS



Mr Wai Man LING

Nurse Consultant (Oncology)
Hong Kong East Cluster, Hospital Authority

Mr Ling Wai Man is a Registered Nurse (General) and Registered Chinese Medicine Practitioner in Hong Kong. He is also a Fellow of the Hong Kong Academy of Nursing in Medicine-Oncology and Medicine-Chinese Medicine. Currently, he is the Nurse Consultant (Oncology) of Hong Kong East Cluster (HKEC) with the major responsibilities in advancing oncology nursing practice, developing nurse clinic, and formulating specialty nursing guidelines and standards. He has been the member of the Cancer Education, Prevention/Early Detection and Research Committee of the Hong Kong Anti-Cancer Society since 2016. He won the HKEC Merit Staff Award and the Outstanding Alumni Award of The School of Nursing of The Hong Kong Polytechnic University in 2014 and 2017 respectively.



Dr Jojo Cho Lee WONG

Associate Professor
The Nettersole School of Nursing
Faculty of Medicine
The Chinese University of Hong Kong

Dr Jojo Wong received her Bachelor of Nursing degree and Doctor of Philosophy in Nursing degree from the Nettersole School of Nursing, Faculty of Medicine, The Chinese University of Hong Kong (CUHK). Her research interests focus on cancer and paediatric care. She is also interested in using innovative technologies in her research and education projects. She has successfully obtained research grants with the total amount exceeding HK\$6 million from various funding sources. She is currently working on several virtual reality-related research projects that engage users in an immersive environment to distract them from medical procedures.



Dr Kevin YAP

Clinical Associate Professor
Surgery Academic Clinical Programme (ACP), Duke-NUS Medical School
Serious Games Lead, Division of Pharmacy, Singapore General Hospital
Co-Lead (Develop), SingHealth Allied Health and Pharmacy Data, Innovation, Technology & Transformation (DIT2) Taskforce, Singapore General Hospital
Adjunct Senior Research Fellow (Digital Health),
School of Psychology and Public Health, La Trobe University, Melbourne, Australia

Clinical Associate Prof Kevin Yap is an inter-disciplinary digital health strategist, healthcare innovator and cyberpharmacy researcher. His interests span the whole digital healthcare innovation cycle through the development, utilization, application and/or evaluation of informatics, internet and other health-related technologies in various healthcare settings to enhance patient care and safety, and health-related information and medications management. His work has included the development and quality evaluation of healthcare innovations, telehealth/mHealth applications, virtual reality and serious games, and 3D-printed applications. He has also applied artificial intelligence (AI) techniques in clinical predictions of side-effects, as well as established quality assessment tools to combat the COVID-19 infodemic and evaluate other digital health technologies. He has over 100 journal publications, 4 book chapters, 1 book and presented at over 100 conferences. His work has won many awards and featured in various media channels in Singapore and Australia. He is on various journal editorial boards and an invited reviewer of many international journals, grants and conferences.



Professor Changrong YUAN

Professor
School of Nursing, Fudan University

Prof Yuan has held more than 20 funded research projects related to cancer care, nursing informatics and long-term care, including the National Natural Science Foundation of China, the Foundation of American Oncology Nursing Society and the International Science and Technology Cooperation Program. More than 300 papers have been published by Prof Yuan's research team, including 65 SCI papers. She was a winner of 2012 Nobuo Maeda International Research Award of the American Public Health Association (APHA) and CANCER NURSING's Annual Research Award for 2019. Prof Yuan is an editorial board member of Cancer Nursing and peer review expert for other SCI journals. More than 40 Master, PhD and post-doctoral students had been successfully graduated with the guidance of Prof Yuan. Since 2018, she has been listed in "Elsevier Most Cited Chinese Researchers" for five years.

FORUM SPEAKERS



Dr Josephine Shuk Ching CHONG

Associate Professor of Practice in Medical Genetics and Clinical Professional Consultant
Department of Paediatrics & Department of Obstetrics and Gynaecology
The Chinese University of Hong Kong

Dr Josephine Chong is an Associate Professor of Practice in Medical Genetics of The Chinese University of Hong Kong (CUHK). She is a paediatrician and a subspecialty fellow in Genomics and Genetics (Paediatrics) accredited by the Hong Kong College of Paediatricians. She is one of the leading paediatricians to implement the first Hong Kong territory-wide newborn metabolic screening service in 2013. She has established the clinical genetics clinic for both children and adult patients at the Prince of Wales Hospital. She is the deputy clinical director of the CUHK-Baylor Joint Centre for Medical Genetics since 2018. In 2021, she introduced the first newborn spinal muscular atrophy screening programme in Hong Kong, and helped identify asymptomatic patients with genetic disorders for early pre-symptomatic treatment. Dr Chong is currently the President of the Hong Kong Society of Medical Genetics and the Hong Kong Society of Genetics Counselling. She is also the Vice-president of the Hong Kong Society of Inborn Errors of Metabolism. Her research mainly focuses on undiagnosed diseases, inborn errors of metabolism disorders, and neurogenetics disorders. With her dedication and expertise in the field, she was honoured with the Ten Outstanding Young Persons award in 2018, and the Woman of Excellence of Hong Kong award in 2019.



Dr Annie Tsz Wai CHU

Head of Operations (Scientific Branch)
Hong Kong Genome Institute

Dr Annie Chu holds a doctorate degree in Clinical Psychology specialising in Health Psychology, Psycho-oncology, and Cancer Genetic Counselling and has completed cancer genetics training in the United States. With her rare dual-expertise in clinical psychology and genetics, she has been contributing as a service provider, consultant, and trainer in the field of genetic counselling and psychosocial services for patients with hereditary cancer syndromes. She also has extensive experiences in designing courses and supervising healthcare professionals and students on cancer genetic counselling in Hong Kong, China, and Asia. Her continuing research including psychological impact of hereditary cancer syndromes, genetic and genomic counselling, and various ethical and psycho-social issues related to genetic counselling and testing brings her insight into enhancement of genetic counselling practice in Cancer Care. Currently being the Head of Operations (Scientific Branch) at Hong Kong Genome Institute, she continues to contribute to nurturing a large talent pool of genetic counsellors, promoting benchmarking in qualification and professional development and promoting public awareness for genetic counselling in Hong Kong.



Dr Brian Hon Yin CHUNG

Chief Scientific Officer
Hong Kong Genome Institute

Dr Brian Chung is a Clinical Associate Professor of the Department of Paediatrics & Adolescent Medicine in the University of Hong Kong (HKU). He is also an Honorary Consultant Geneticist in several hospitals as well as the Department of Health. He is currently the President-Elect of the Asia Pacific Society of Human Genetics. With his significant contribution to research focusing on clinical application of whole genome technologies, clinical genetics & genetic counselling and precision medicine and multi-omics with publications in top journals, he was awarded the Best Young Investigator Prize 2017 of the Hong Kong College of Paediatricians. In recognition of his contribution to teaching and curriculum development, he was also awarded the Faculty Teaching Award in HKU as well as QS Reimagine Education Award and the Teaching Innovation Award. Since 2021, he has been designated as the Chief Scientific Officer at the Hong Kong Genome Institute to promote the city's long-term development of genomic medicine by driving clinical application, advancing research, nurturing talents and enhancing public literacy.

FORUM SPEAKERS



Professor Kelly METCALFE

Associate Dean, Research and External Relations
Professor, Lawrence S. Bloomberg Faculty of Nursing
University of Toronto

Prof Kelly Metcalfe is a Professor at the Lawrence S. Bloomberg Faculty of Nursing and the Department of Surgery, Faculty of Medicine, the University of Toronto and a Senior Scientist at the Women's College Research Institute. She currently holds the Bloomberg Professorship in Cancer Genetics and is the Associate Dean of Research. Prof Metcalfe received her BScN in 1996 from the University of Western Ontario, and her PhD in 2002 from the Institute of Medical Science at the University of Toronto. Her research focuses on the prevention and treatment of breast and ovarian cancer in high-risk women, most specifically those with a BRCA1 or BRCA2 mutation. She has led international studies resulting in seminal research papers on the topic of treatment of BRCA-associated breast cancer. Professor Metcalfe is using those research findings to test new models of care to ensure that women have access to genetic testing at the time of cancer diagnosis to make informed decisions about treatments. She is a Fellow of the Canadian Academy of Health Sciences and the American Academy of Nursing, and a Member of the New College of Scholars in the Royal Society of Canada. She has received numerous awards, and most recently she received the Women of Action Scientific Award from the Israel Cancer Research Fund.



Dr Emma TONKIN

Associate Professor
Faculty of Life Sciences and Education
University of South Wales

Dr Emma Tonkin's research and consultancy activity centres on the delivery of genomic healthcare to improve patient, family and community outcomes globally. Primarily working with the nursing and midwifery professions, her work has focused on health professional education and engagement and service development initiatives within the UK for mainstreaming genomics across health services.

Dr Tonkin leads the Genomics Policy Unit at the University of South Wales and she is a founding member and co-lead for the Global Genomics Nursing Alliance, an initiative that initially brought together representatives from 19 countries to develop a roadmap and benchmarking tool (ASIGN) to drive nursing and genomics forward internationally.

Dr Tonkin has just completed an 18-month post as the Academic Lead for the National Nursing & Midwifery Genomics Transformation Programme, funded by NHS England. She has also been a subject matter expert for a number of years for Health Education England's Genomics Education Programme contributing to several activities including supporting the revision of national nursing competencies in genomics.

Dr Tonkin teaches genomics across the undergraduate and postgraduate health courses at the University of South Wales. Her 18 years working in this field (including two career breaks) has yielded over 40 journal publications, numerous reports, four book chapters and an award-winning education website Telling Stories, Understanding Real Life Genetics. She reviews for a number of journals.

WORKSHOP SPEAKERS



Dr Paul KONG

Founding Chairperson
Chinese Association of Motivational Interviewing

Dr Paul Kong is a clinical psychologist with over 20 years of rich clinical experience. Before practising independently in the United Kingdom, Dr Kong had a long track record of serving patients with mental health problems in public hospitals in Hong Kong and held the role of Adult Psychiatry Service Team In-charge. Dr Kong is the fellow of the Hong Kong Psychological Society and has been appointed as Guest Lecturer of the University of Hong Kong and Honorary Clinical Supervisor of the University of Hong Kong and the Chinese University of Hong Kong. He is the founding chairman of the Chinese Association of Motivational Interviewing and the certified motivational interviewing trainer of the international Motivational Interviewing Network of Trainers (MINT). He has been involved in various publications and translated a number of important texts and manuals of motivational interviewing. Invited by public departments, non-governmental organizations, and universities from different countries/regions, Dr Kong has trained over 6000 healthcare professionals to apply motivational interviewing to enhance health care quality.



Dr Dorothy Ngo Sheung CHAN

Assistant Professor
The Nethersole School of Nursing
Faculty of Medicine
The Chinese University of Hong Kong

Dr Dorothy Chan's research interest focuses on cancer prevention and screening, model development, symptom management for cancer patients after surgery and other related treatments. Dr Chan is a dedicated and passionate researcher who strives for excellence in transforming empirical and evidence-based knowledge into practice for better health of vulnerable groups. She has participated in several ethnic minority health-related projects to explore factors associated with their screening behaviours, and to develop health education materials as well as adopting skills such as motivational interviewing for promoting cancer screening and prevention among ethnic minorities. Having received professional training, Dr Chan is currently a practitioner who conducts motivational interviewing sessions for various populations. She is a member of the Motivational Interviewing Network of Trainers (MINT).

WORKSHOP SPEAKERS

Ms Chiko CHONG

Manager (Training)
Playright Children's Play Association

Ms Patience LAI

Senior Hospital Play Specialist
Playright Children's Play Association

Ms Cheryl LO

Hospital Play Specialist
Playright Children's Play Association

Playright Children's Play Association (Playright) is a charity founded in 1987 in Hong Kong. Rooted in Hong Kong for several decades, Playright has all along pursued the mission of advocating children's play because we "Value Children, Value Play."

Join us for an engaging workshop on Hospital Play: Supporting the Psychosocial Needs of Hospitalized Children. This workshop is designed to provide participants with a comprehensive understanding of the power of play in addressing the emotional and psychosocial needs of children during their hospital stay. Through experiential activities, we will explore how play interventions can offer play opportunities, emotional support, preparation, and coping and distraction techniques to meet the unique needs of each child.

Ms Angela SHUM

Music Therapist

Ms Angela Shum has been practicing registered nurse for more than 10 years before becoming a music therapist in 2008. Ms Shum is a fellow of the Association for Music and Imagery (USA) and the assistant trainer for the Music Breathing training program in the Asia region. She previously worked as a music therapist and as a rehabilitation therapist at Provincial /State hospitals in Canada and the United States, respectively. She has extensive experience working with clients having needs in dementia, forensic psychiatry, problem gambling/addictions, stroke/traumatic brain injury, and developmental disabilities. Her expertise and passion are in Focused Music Imagery (FMI), Music Breathing (MB), Guided Imagery and Music (GIM), and Focusing Oriented Expressive Arts (FOAT).

Dr Ankie Tan CHEUNG

Assistant Professor
The Nethersole School of Nursing
Faculty of Medicine
The Chinese University of Hong Kong

Dr Ankie Cheung is an Assistant Professor at The Nethersole School of Nursing, Faculty of Medicine, The Chinese University of Hong Kong. She is a registered nurse and certified music breathing practitioner in Hong Kong. Dr Cheung's current research focuses on paediatric oncology, cancer survivorship care, and psychosocial care. She has accomplished several trials to promote psychosocial well-being among paediatric brain tumour survivors and children from low-income families through music-based interventions. Recently, she has been dedicated to designing and evaluating user-centred mobile health technologies to improve symptom management for children at the early stage of cancer survivorship and their caregivers. Dr Cheung aims at working towards supporting and empowering the health and well-being of children and their caregivers, in order to foster the development of a holistic survivorship care plan for Chinese paediatric oncology population as a whole.

PROGRAMME PLANNER

22 May 2024 Wednesday

13:30 – 14:00 Registration

Lobby

14:00 – 17:30 Pre-symposium workshops

Workshop on motivational interviewing

Dr Paul KONG

CYT202

Use of motivational interviewing in clinical and community setting

Workshop on motivational interviewing

Dr Dorothy Ngo Sheung CHAN

CYT202

Use of motivational interviewing in cancer prevention and screening

Workshop on psychosocial cancer care

Ms Chiko CHONG, Ms Patience LAI, Ms Cheryl LO

CYT203

Hospital play for improving psychosocial outcomes - Let's play

Workshop on psychosocial cancer care

Ms Angela SHUM

CYT203

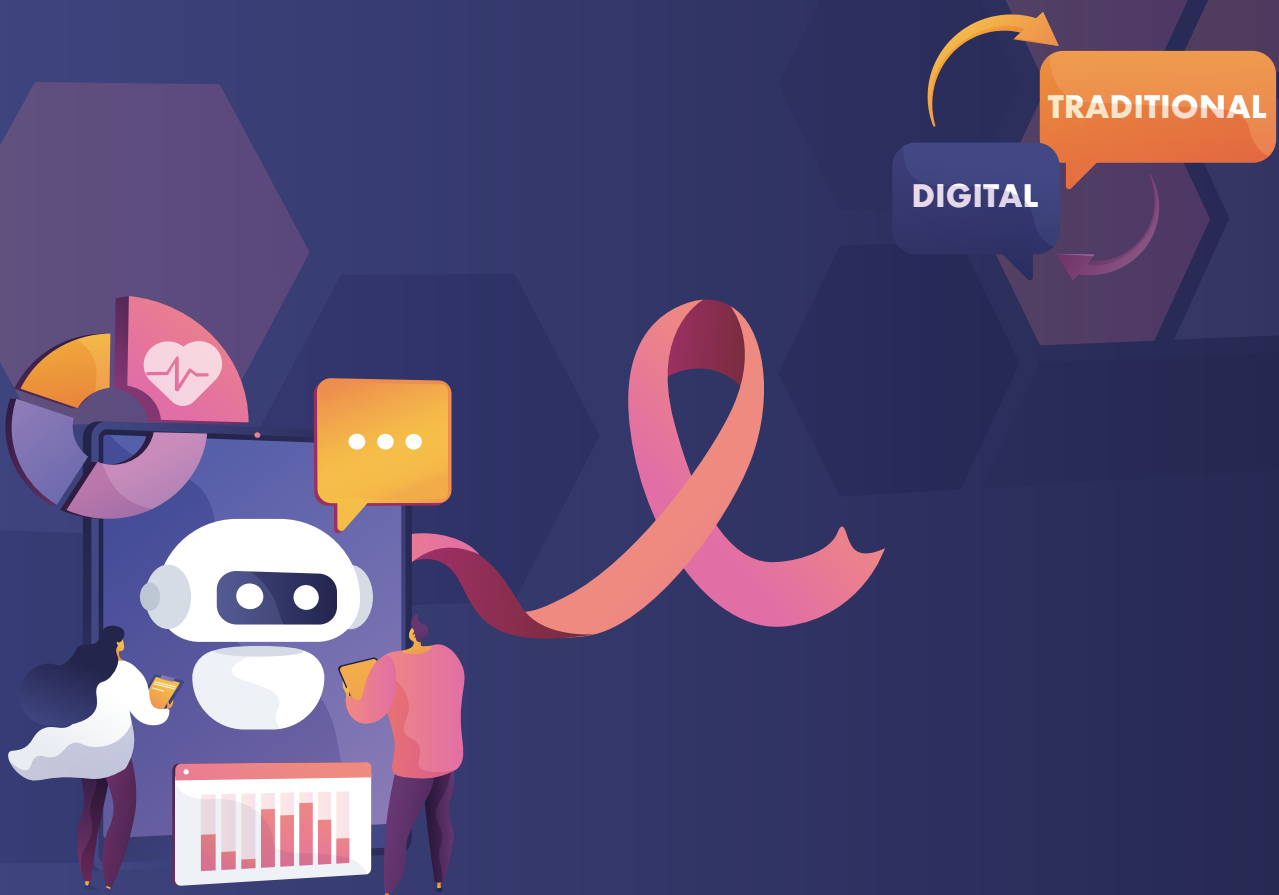
Music interventions for improving psychosocial outcomes

Workshop on psychosocial cancer care

Dr Ankie Tan CHEUNG

CYT203

Music interventions for improving psychosocial outcomes



PROGRAMME PLANNER

23 May 2024 Thursday

10:00 – 10:30 Registration

LT1A&B

10:30 – 11:00 Opening Ceremony

LT1A&B

Welcoming Address

Prof Wai Tong CHIEN

Opening Address

Prof Anthony Tak Cheung CHAN

11:00 – 12:30 Keynote Address

LT1A&B

Advancing cancer prevention and screening in vulnerable populations and ethnic minority groups: Insights from community-engaged research

Prof Hae-Ra HAN

Transforming cancer care through digital innovations: Benefits and challenges

Prof Jo ARMES

12:30 – 14:00 Lunch & Poster Viewing

CYT214 & CYT215

14:00 – 15:30 Concurrent Session I

LT1A&B, CYT201, CYT202, CYT203, CYT209A, CYT209B

014

Effectiveness of psychoeducation interventions on caregivers of children with cancer: Systematic review and meta-analysis

Ms Lophina PHIRI

065

Experience of caregivers of children receiving cancer treatment: Qualitative study

Ms Lophina PHIRI

025

Profiles of chemotherapy-induced peripheral neuropathy in breast cancer patients undergoing chemotherapy: A latent class analysis

Ms Ruolin LI

320

The effectiveness of virtual reality technology interventions on cognitive function, depression, and quality of life in clinical populations: A systematic review and meta-analysis of randomized controlled trials

Dr Qiuqing DU

170

Effects of yoga intervention on the fatigue-pain-sleep disturbance symptom cluster for breast cancer patients: A systematic review

Ms Yishu QI

038

Women's experience and management of cancer-related fatigue and psychological distress during treatment for gynecological cancer: A qualitative study

Ms Xing MA

039

The effectiveness of positive psychological interventions in patients with cancer: A systematic review and meta-analysis

Ms Xia TIAN

066

The relationship between illness perception and adherence to oral anticancer agents Among patients with gastrointestinal tract cancer: The mediating role of medication perception

Ms Yongfeng CHEN

069

Coping experience of patients with advanced cancer from the perspective of sense of coherence : A qualitative study

Ms Yongqi HUANG

188

Death anxiety in adolescents and young adults with cancer and its associated factors Based on terror management theory: A cross-sectional study

Ms Yanjia LI

CYT LT1

CYT201

CYT202

107	The mediating role of cognitive emotion regulation in the relationship of psychological flexibility and psychological distress: A cross-sectional study among breast cancer patients	Ms Xiaoting ZHENG
119	Identifying central symptoms and central symptom clusters among lung cancer patients receiving immune checkpoint inhibitors: A network analysis	Ms Hong WANG
125	A meta-analysis of the effects of psychological intervention based on self-transcendence theory on the spiritual level and negative emotions of cancer patients	Ms Wang ZHENG
137	Mechanism analysis and program construction of exercise on cognitive function in breast cancer patients during chemotherapy	Dr Yu LIU
305	Psychosocial interventions of cancer-related fatigue in gastrointestinal cancer patients: A literature review	Ms Jinling LU

CYT203

187	Integrating music and progressive muscle relaxation for psychological management in women undergoing chemotherapy for female reproductive cancer: A pilot study	Dr Thi Khanh NGUYEN
192	Well-being experience in patients with advanced cancer: A qualitative study	Prof Wenli XIAO
298	The cancer and cardio-toxicity symptoms, and hemodynamic characteristics among breast cancer patients: A cross-sectional study	Prof Qun WANG
007	A qualitative study to explore the factors influencing the mammography screening practices among South Asian women in Hong Kong	Dr Dorothy Ngo Sheung CHAN
319	Effect of decision aid on decisional conflict and cervical cancer screening uptake among young working women: A pilot randomised controlled trial	Dr Dorothy Ngo Sheung CHAN
308	Effectiveness of invitation strategies of offering HPV self-sampling kits to increase screening coverage: An updated systematic review and meta-analysis	Ms Ho Yan WONG

316	Knowledge, attitudes, and practices regarding cancer screening and prevention among ethnic minorities in mainland China: A literature review	Dr Wenqian ZHAO
-----	--	-----------------

CYT209A

011	Factors influencing psychosocial adaptation in patients with enterostomies and network analysis: A nationwide multicentre cross-sectional study	Prof Xu ZHANG
033	Needs-oriented psychoeducational intervention among caregivers of AYA cancer patients: A randomised controlled trial	Dr Qinqin CHENG
034	Randomized controlled trial on the effectiveness of a multicomponent self-management intervention for people with cancer pain: A study protocol	Ms Junfeng ZHANG
113	Developmental pattern of symptoms of hematopoietic stem cell transplantation patients: A longitudinal mixed methods	Dr Jingyi CHEN
199	Status and influential factors of cognitive impairment in cancer children: A cross-sectional study from western China	Mr Zefang CHEN

CYT209B

037	A feasibility study to examine the effects a Young Adult Community Health Advisor (YACHA)-Led intervention on colorectal cancer screening uptake among asymptomatic South Asians in Hong Kong	Ms Tika RANA
168	Young Adult Community Health Advisor (YACHA)-Led intervention to increase colorectal cancer screening uptake among South Asians in Hong Kong: A randomised controlled trial	Ms Tika RANA
128	Methodological quality and content of recommendations for breast cancer risk management among BRCA1/2-mutation carriers: A systematic review of guidelines and consensus statements	Ms Feng JING

191

Community-based interventions to improve lung cancer screening knowledge, beliefs, and uptake among high-risk individuals: A literature review

Ms Yuan YANG

CYT209B

052

The impact of colorectal cancer patient perceived family risk communication on first-degree relatives' colonoscopy screening behavior: A structural equation model

Ms Yin YANG

121

Translation and psychometric evaluation of an instrument to assess the health beliefs regarding Human Papillomavirus vaccination among Pakistani mothers in Hong Kong

Ms Pui Kay Pinky LEE

15:30 – 16:00 Tea Break & Poster Viewing

2/F, Lobby, CYT214 & CYT215

16:00 – 17:45

Plenary Session I:
Collaborative Approaches in Supportive Care

LT1A&B

The power of patient-reported outcomes measures in transformation of cancer care

Prof Changrong YUAN

How collaborative approach affects the development of oncology nursing care: Opportunities or challenges?

Mr Wai Man LING

Enhance the global access to high quality, high value cancer care: NCCN's global programs

Dr Wui-Jin KOH

18:15 – 19:15 Symposium Dinner (by invitation)

LT1A&B



PROGRAMME PLANNER

24 May 2024 Friday

08:30 – 09:00 Registration

LT1A&B

09:00 – 10:30 Genomic and Genetic Nursing Forum I:
Future Directions in Genomic and Genetic Nursing

LT1A&B

Research opportunities in genomic and genetic nursing:
Building a program of research in cancer genetics

Prof Kelly METCALFE

Capacity building for the future of genomic and genetic nursing
and the wider nursing workforce

Dr Emma TONKIN

10:30 – 11:00 Tea Break & Poster Viewing

2/F, Lobby, CYT214 & CYT215

11:00 – 12:30 Genomic and Genetic Nursing Forum I:
Translation of Genomic and Genetic Sciences into Nursing Practice

LT1A&B

Development of genomic medicine in Hong Kong

Dr Brian Hon Yin CHUNG

Application of genetic counselling in cancer care

Dr Annie Tsz Wai CHU

Building a multidisciplinary clinical genetics team

Dr Josephine Shuk Ching CHONG

12:30 – 14:00 Lunch & Poster Viewing

CYT214 & CYT215

14:00 – 15:30 Concurrent Session II

CYT201, CYT202, CYT203, CYT209A, CYT209B

138

Perceptions on the use of tele-delivered supportive cancer care services among breast cancer survivors diagnosed during COVID-19 pandemic in Hong Kong:
A qualitative analysis

Dr Nelson C. Y. YEUNG

CYT201

169

A dynamic online nomogram model for acute vomiting after transarterial hepatic chemoembolization of primary liver cancer

Dr. Yi LIANG

185

Effect of a mhealth-based supportive care program on health-related quality of life among postoperative esophageal cancer survivors:
A pilot randomized controlled trial

Ms Meimei SHANG

194

Perceptions of pediatric cancer survivors and their parents related to an instant messaging-delivered brief motivational interviewing program in promoting survivors' physical activity: A qualitative study

Dr Ankie Tan CHEUNG

105

Comparison of three nutritional assessment methods associated with the prognostic impact of laryngeal cancer

Ms Hanxiao YI

131

Coping strategies for financial toxicity among cancer survivors in China: A multi-perspective qualitative study using the socioecological framework

Prof Weijie XING

074

Resilience interventions for pediatric cancer patients' families:
Systematic review and meta-analysis

Ms Yuna SHAO

CYT202

130

The relationship between financial toxicity and symptom burden among breast cancer Patients: A longitudinal study utilizing a cross-lagged panel model

Ms Yi KUANG

106

Cross-cultural adaptation and psychometric validation of the Chinese version of McGill Quality of Life Questionnaire-Expanded (MQOL-E) in mainland China

Ms Xiaojun ZHOU

175	Effects of a 12-week exercise-based intervention on weight management in overweight or obese breast cancer survivors: A randomized controlled trial <i>Ms Fuyun ZHAO</i>	CYT202
191	Improving communication between cancer patients and their underage children: A systematic review <i>Ms Sha ZHAO</i>	
052	Suffering and self-overcoming: A grounded theory of the process of coping with financial toxicity among young women with breast cancer <i>Ms Junyi RUAN</i>	
121	Impact of body image perception on behavioral outcomes in Chinese adolescent and young adult (AYA) survivors of sarcoma <i>Ms Yihui WEI</i>	
036	A systematic review to analyse qualified nurses' experiences and support needs while caring for dying patients <i>Ms Ruo WANG</i>	CYT203
197	Financial toxicity and its risk factors among patients with cancer in china: A multisite study <i>Dr Binbin XU</i>	
235	Experiences of home-based weight management during rehabilitation in breast cancer patients: A qualitative study <i>Dr Zhaohui GENG</i>	
310	Mediating effects of family functioning between social support and social adjustment in children with acute leukemia <i>Ms Yuqing SHEN</i>	
311	A pilot study on a carer's needs-oriented intervention on the caregiving self-efficacy of informal carers of community-dwelling older people with life-limiting illnesses <i>Ms Chun Miu LAI</i>	
035	Perception of uncertainty concerning illness and coping styles among parents of children with central nervous system tumors: A correlation analysis <i>Ms Zhihuan ZHOU</i>	
292	Feasibility of virtual reality-based intervention for children with cancer receiving their first chemotherapy <i>Prof Cho Lee WONG</i>	
120	Perception of online communities towards the use of cancer immunotherapy: A data mining study of 3.6 million web-based posts from social media platforms <i>Ms Xingyue WU</i>	
129	Experiences of cancer patients using electronic symptom management systems: A qualitative systematic review and meta-synthesis <i>Ms Siying ZHU</i>	CYT209A
157	Effect of virtual reality on perioperative anxiety and symptoms in colorectal cancer patients: Meta-analysis and systematic review <i>Dr Xingzhu YUAN</i>	
163	Construction and application of case management platform for breast cancer extended care led by oncology specialist nurses <i>Mr Chengang HONG</i>	
329	Effect of tele-exercise interventions on quality of life in cancer patients: A meta-analysis <i>Ms Xiaoli CHEN</i>	
134	Sociodemographic factors influencing the financial toxicity in lung cancer patients receiving immune checkpoint inhibitors: A cross-sectional study <i>Mr Yan DONG</i>	
326	Efficacy of decision support interventions on decision knowledge, conflict and satisfaction among cancer survivors: A meta-analysis of randomized controlled trials <i>Ms Yang CHEN</i>	
009	Profiles of symptoms in Chinese children with leukemia: A latent profile analysis <i>Dr Jingting WANG</i>	
010	The development of a support system with intelligent information recommendation function for parents of children with leukemia <i>Dr Jingting WANG</i>	

174

Mobile app for gynecologic cancer support program for patients with gynecologic cancer receiving chemotherapy in China: Multicenter randomized controlled trial

Prof Jiemin ZHU
CYT209B

195

A pilot trial of a patient-centered digital self-management support program for advanced lung cancer patients with mix-method evaluations

Dr Agnes LAI

204

Mechanisms of cardiovascular toxicities induced by cancer therapies and promising biomarkers for their prediction: A scoping review

Ms Tingting YAN

220

Helping smokers with cancer quit smoking: A need for novel strategies

Prof Ho Cheung William LI

309

Case management of pulmonary rehabilitation based on Internet+Omaha system in a patient with advanced lung cancer

Ms Tian JUN

15:30 – 15:45 Tea Break & Poster Viewing

2/F, Lobby, CYT214 & CYT215

15:45 – 17:25

**Plenary Session II:
Innovations Across the Cancer Control Continuum**

LT1A&B

Using innovation and technology to improve racial or ethnic minorities' cancer survivorship: Lesson learnt and way forward

Prof Eun-Ok IM

When J.A.R.V.I.S. meets oncology:
Powering cancer care through digital health innovations

Dr Kevin YAP

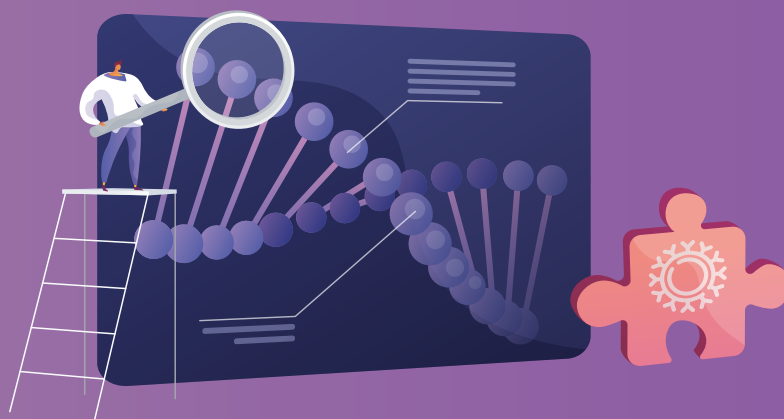
Enhancing psychosocial support for pediatric cancer patients through virtual reality interventions

Dr Jojo Cho Lee WONG

Service innovation in cancer care:
Digitalization in medicine and development of a telehealth clinic

Dr Dominic Chun Wan CHAN

17:25 – 17:45 Award Presentation & Closing Ceremony

LT1A&B


POSTER LIST

CYT214 & CYT215

01

Lessons learned in developing health educational materials to promote cervical health and human papillomavirus vaccination for secondary school girls
Dorothy NS CHAN

02

Effects of cancer rehabilitation interventions on health-promoting behaviours, psychological distress, and health-related quality of life in women treated for gynaecological cancers: A systematic review and meta-analysis
Liuxin ZHANG; Yongfeng CHEN; Ankie Tan CHEUNG; Ka Ming CHOW

03

Research progress and implications of epigenetics in precision nursing
Li WANG; Zhihong YE; Jing SHAO

04

Training program of lay navigators for promoting the colorectal cancer screening uptake for average risk older adults in the community
Yvonne HU YU; Dorothy NS CHAN; Winnie KW SO

05

The 3-2-1 model of family caregiving for persons with comorbid dementia and cancer: An interpretative phenomenological analysis of end-of-life caregiving experience
Gigi Cheuk Chi LING

06

Enhancement in cytotoxic spillage management
SF CHU; SS CHAN; WY CHAN; TY LAM; NK WONG

07

Can nurses taking up the role of genetic counselling in Hong Kong?
R. AHMAT

08

Translation and psychometric evaluation of chichewa version of Brief COPE among the caregivers of children with cancer
Lophina PHIRI; William Ho Cheung LI; Patrick G PHIRI

09

Psychosocial interventions for improving mental health in families with parental cancer: A systematic review
Hailey CHAN; Yuen Yu CHONG

10

Safeguarding the rights of patients with hereditary cancers and rare diseases: The Hong Kong Genome Project and the development of ethical guidelines
Claudia CY CHUNG; Hong Kong Genome Project; Annie TW CHU; Brian HY CHUNG

11

Correlation between psychological resilience and social support in gynecological cancer patients undergoing chemotherapy
Li Ming YU; Dai Chan YUAN

12

Effectiveness of a theory-based mobile health physical activity intervention for breast cancer patients during chemotherapy
Zhaohui GENG; Changrong YUAN

13

Practice of nurses-led model on the risk assessment and management of cancer
Qian LUO; Li WANG; Jinxiu SU; Yi YANG; Mingjie HUO; Shidong LU; Jianmin LI

14

Common symptoms of patients with malignant tumor care and management of collaborative prevention and treatment program
Li WANG; Qian LUO; Mingyue OU YANG; Shuxian PANG; Tan WANG; Jianmin LI

POSTER LIST

CYT214 & CYT215

15

Rehabilitation exercise for breast cancer survivors with musculoskeletal symptoms : A scoping review

LingYun JIANG; Feng JING; Yan HU

16

A strive to mitigate the risk of catheter damage of implanted venous access port by evidence-based approach

SM CHAN; WM LING; HM LAM; YY NG; WK HO; SH CHAN; CH FUNG; WH CHEUNG; SK YEUNG; PS CHAN

17

Lesson learned in supporting pre-registration nursing students to develop an innovative health education programme in the promotion of colorectal cancer screening

Winnie SK KWAN

18

Summary of best evidence for enhanced recovery after surgery for patients undergoing lung cancer operations

Yutong LU; Renhua XU

19

Breast cancer risk assessment evaluation of screening tools for genetics referral for women in taiwan

Su-Ying FANG

20

Effectiveness of discharge education and support for parents of children newly diagnosed with cancer: a systematic review.

Kin Shan LING; Siu King FU; Gigi Cheuk Chi LING

21

Advances in the study of pain catastrophizing in patients with breast cancer

Haowei DU; Shuo CAI; Aimin WANG

22

Effectiveness of nurse-led swallowing exercise in managing dysphagia among head and neck cancer patients undergoing radiotherapy

Tung Lam CHEUNG; Kwun Ching CHAN; Marques Shek Nam NG

23

Daily self-health management and the role of Nurses of Diabetic patients during the COVID-19 pandemic: A review

Jianxun HE; Beilei LI; Yan BO; Minghui ZHANG; Chuhan MIAO

24

Effects of cancer patient self-management led by nurse on self-efficacy and quality of life: a systematic review and meta-analysis

Ling ZHU; Ting GONG; Min ZHANG

25

Artificial intelligence-driven deep learning and augmented reality of oncology care in qualitative research

Jiani CHEN; Ying ZHOU; Wenying TAN; Jingwen CHEN; Yu MA

26

A literature review on the effectiveness of digital pain diary for cancer patients receiving palliative care in out-patient setting

Kei Kwan CHAN; Fung Ching CHAU; Gigi Cheuk Chi LING

27

Scoping review of shared decision-making in genetic counseling

Chenyang PENG; Ni NING; Yiyu LI; Xiangmin TAN; Chaofeng TU; Mei SUN

28

Nurse-driven genetic counselling in genomic healthcare: an integrative literature review

Ka Kei Alison CHU

POSTER LIST

CYT214 & CYT215

29

Investigation of hereditary risk knowledge, attitude, behavior status and influencing factors of breast cancer patients

Zixin HU; Jinghui ZHANG; Li LI

30

Educational interventions for nurses regarding breakthrough cancer pain management: A literature review

Wun Ting LI; Yuk Hei CHENG

31

Dietary structure influences breast cancer-associated lymphedema through the mediating effect of BMI

Yuzhi YAO; Xiaojuan CHEN; Jie LI; Tianzhu LONG

32

Behind every child with health problems, there lives an innocent soul; behind every caregiving parent, there exists a vulnerable heart

Cho Lee WONG; Carmen Wing Han CHAN; Ka Ming CHOW; William Ho Cheung LI; Ankie Tan CHEUNG; Patrick Ka Ho CHUI

33

Skin Self-care Behavior Scale for patients with cancer receiving targeted therapy : Instrument development and cross-sectional validation study

Xiuqiong YANG; Jieling CHEN

34

A qualitative study of caregivers' experience and management of cognitive impairment in children with cancer from the perspective of symptom management theory

Tao LIU; Lin MO

35

The trajectory of self-reported physical activity and sedentary behavior at surgery and after chemotherapy in chinese breast cancer patients: A latent transition analysis

Zhaohui GENG; Wenjia YE; Zhou ZHOU; Weibo LYU; Kangyao CHENG

36

Psychometric properties of the Chinese version of Quality of Communication questionnaire for cancer patients and their family caregivers with physicians

Zhihan CHEN; Zhishan XIE; Yanjia LI; Siyuan TANG; Jinnan XIAO

37

Implementing patient-centred cancer care: using experience-based co-design to produce weight management services for patients recovering from breast cancer

Zhaohui GENG; Zhou ZHOU; Wenjia YE; Kangyao CHENG; Weibo LYU

38

The exercise self-efficacy of children and adolescents with cancer during treatment

Yanyan LIU; Junjie TIAN

39

Information needs of breast cancer patients during the early stages of treatment

Kanittha RATTANAKANLAYA; Boonchoo ANUSASANANUN; Patcharin CHAISURIN; Imjai CHITAPANARUX; Wimrak ONCHAN; Suchada SAJJAPRAKASIT; Penchan SANGUANSAK; Srisuda IAMRUKSA

40

Knowledge and attitudes toward cancer pain management among vietnamese nurses: a cross-sectional study

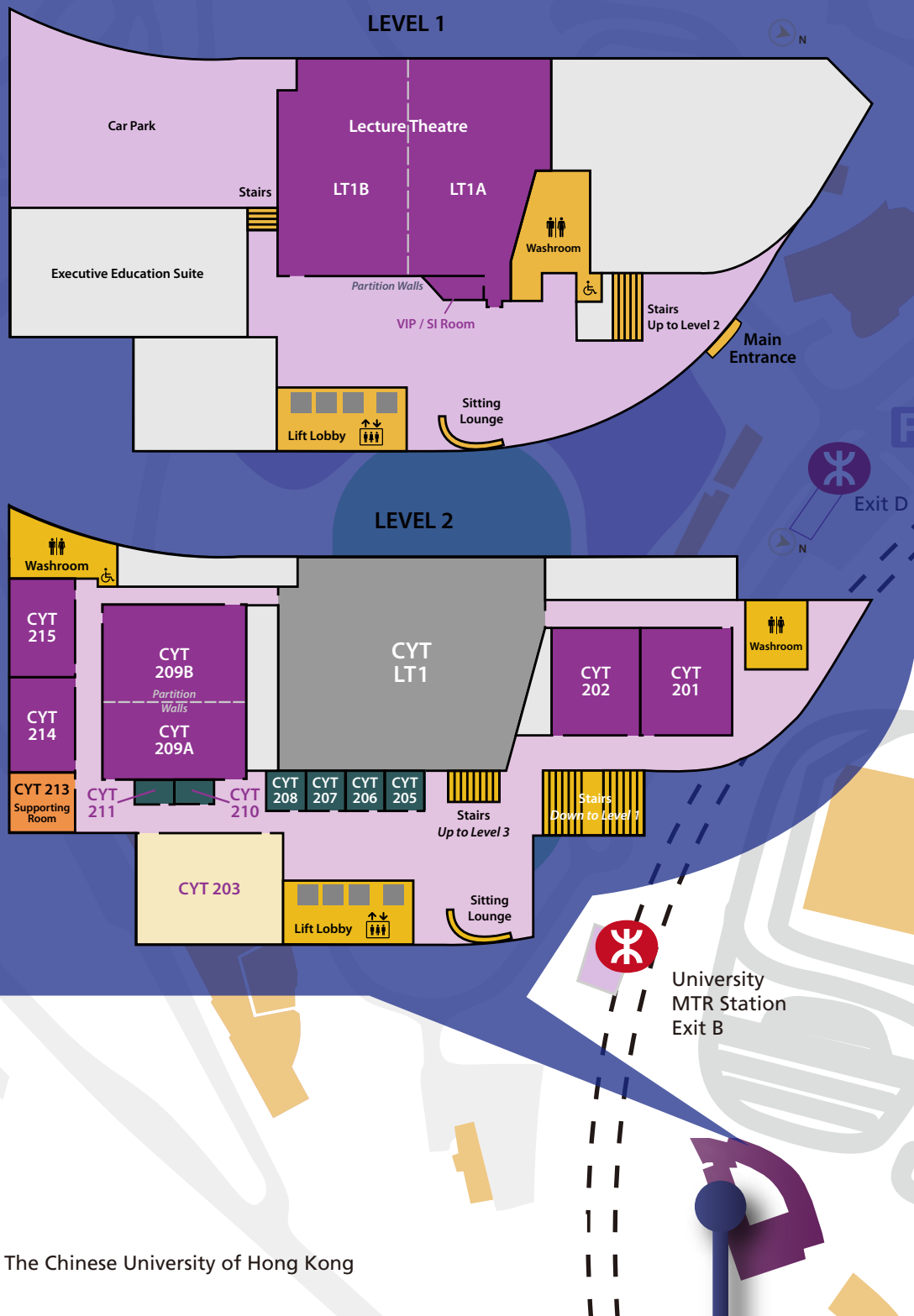
Vi DO; Chiung Yin HSU

41

The effectiveness of virtual reality-based interventions on pain, anxiety, depression and quality of life among cancer survivors: A meta-analysis of randomized controlled trials

Xiaolin HU; Yang CHEN

FLOOR PLANS & CAMPUS MAP



Symposium Venue

**Henry Cheng International Conference Centre
Cheng Yu Tung Building
The Chinese University of Hong Kong**

SPONSORS

Main sponsor



癌症基金會
CANCERFUND

So no one faces cancer alone

Sponsors



香港中文大學崇基學院
Chung Chi College
The Chinese University
of Hong Kong



香港中文大學新亞書院
New Asia College
The Chinese University
of Hong Kong

Y. K. Pao Foundation Centre for
Nursing Excellence in Chronic Illness Care



icumedical
human connections



Laerdal
helping save lives

MedSim
Healthcare Education


solventum